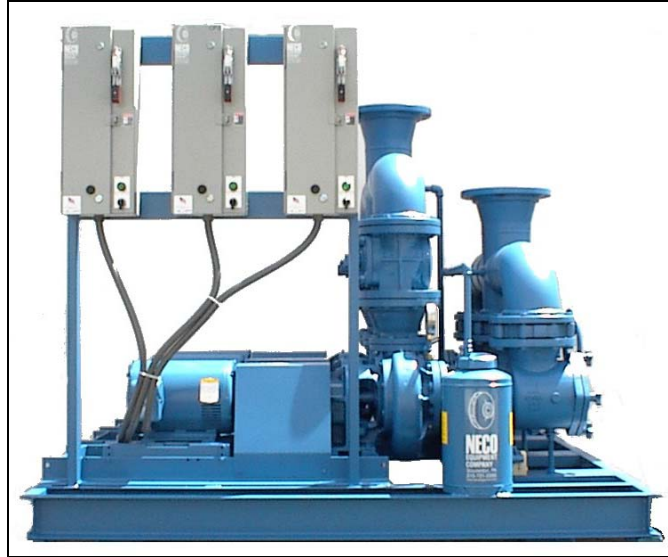


# PACKAGED CIRCULATING SYSTEMS

## SERIES PCS



Model PCS-5095-30-8-T-CS

### APPLICATION

Applications include commercial, industrial, and any other installations requiring efficient circulation of heating and chilled water for HVAC or process applications.

### DESIGN FEATURES

- Minimizes installation cost
- Professionally engineered components
- Compact design minimizes floor space
- Single source responsibility
- Factory assembled and tested

### ADDITIONAL LINKS (PDF)

- System Selection Worksheet
- Dimensions
- Specifications
- Submittal Data
- Operation and Maintenance
- Price Sheets

***SPECIFY WITH CONFIDENCE, SPECIFY NECO PUMPING SYSTEMS***